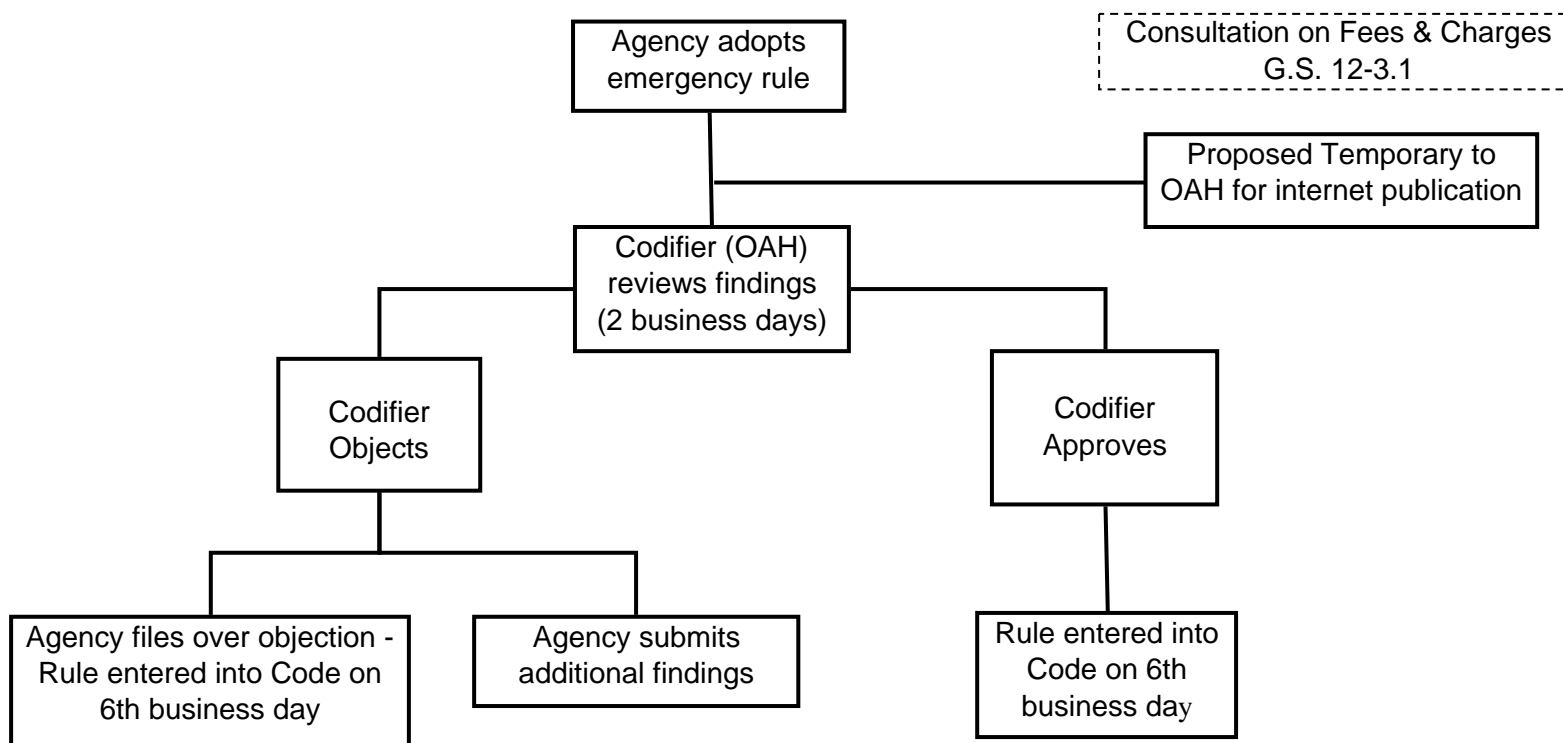


EMERGENCY RULEMAKING

(G.S. 150B-21.1A)



Emergency Rule expires on the earliest of the following dates:

- (1) The date specified in the rule.
- (2) The effective date of the temporary rule adopted to replace the emergency rule, if the Commission approves the temporary rule.
- (3) The date the Commission returns to an agency a temporary rule the agency adopted to replace the emergency rule.
- (4) Sixty days from the date the emergency rule was published in the North Carolina Register, unless the temporary rule adopted to replace the emergency rule has been submitted to the Commission.